

ACEMAŞİRAN PEŞREVİ

Usûlü : Hafif

Müzik : Tanbûrî Emin Ağa

1. Hâne

The first Hâne is composed of four staves of music. The first staff begins with a treble clef, a key signature of one flat (B-flat), and a 3/2 time signature. The melody starts with a half note, followed by quarter notes and eighth notes, with various ornaments and rests. The second staff continues the melody with similar rhythmic patterns. The third staff shows a more complex rhythmic structure with eighth and sixteenth notes. The fourth staff concludes the Hâne with a final note and a double bar line.

Teslim

The Teslim section is composed of four staves of music. The first staff begins with a treble clef, a key signature of one flat (B-flat), and a 3/2 time signature. The melody starts with a half note, followed by quarter notes and eighth notes, with various ornaments and rests. The second staff continues the melody with similar rhythmic patterns. The third staff shows a more complex rhythmic structure with eighth and sixteenth notes. The fourth staff concludes the Teslim with a final note and a double bar line.

2. Hâne

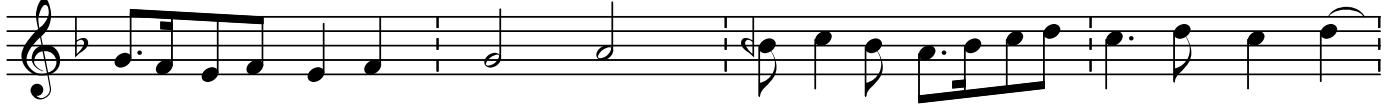
The second Hâne is composed of three staves of music. The first staff begins with a treble clef, a key signature of one flat (B-flat), and a 3/2 time signature. The melody starts with a half note, followed by quarter notes and eighth notes, with various ornaments and rests. The second staff continues the melody with similar rhythmic patterns. The third staff shows a more complex rhythmic structure with eighth and sixteenth notes, including a sharp sign (F#) indicating a change in the key signature. The Hâne concludes with a final note and a double bar line.

ACEMAŞÎRAN PEŞREVİ

Tanbûrî Emin Ağa



3. Hâne



4. Hâne



ACEMAŞÎRAN PEŞREVİ

Tanbûrî Emin Ağa

The image displays a musical score for the piece "Acemaşîran Peşrevî" by Tanbûrî Emin Ağa. The score is written on ten staves of music, each beginning with a treble clef and a key signature of one flat (B-flat). The notation includes various rhythmic values such as eighth, sixteenth, and thirty-second notes, as well as rests and accidentals. The piece concludes with a double bar line and a fermata symbol. The name of the composer, "Dr. Semra Özgün", is printed at the bottom right of the page.

Dr. Semra
Özgün