

ACEMKÜRDİ SAZ SEMÂİSİ

Usûl; Aksak semâi

Aydın ORAN

1 . Hane

Musical notation for the first hane of the Acemkürdi Saz Semâisi. It consists of three staves of music in 10/8 time. The first staff starts with a treble clef and a key signature of one flat. The music features a mix of eighth and sixteenth notes, with several triplet markings (indicated by a '3' above a bracket) in the second and third staves. The piece concludes with a fermata over the final note.

Teslim

Musical notation for the Teslim section of the Acemkürdi Saz Semâisi. It consists of two staves of music in 10/8 time. The first staff starts with a treble clef and a key signature of one flat. The music features a mix of eighth and sixteenth notes, with several triplet markings (indicated by a '3' above a bracket) in the second staff. The piece concludes with a fermata over the final note.

2 . Hane

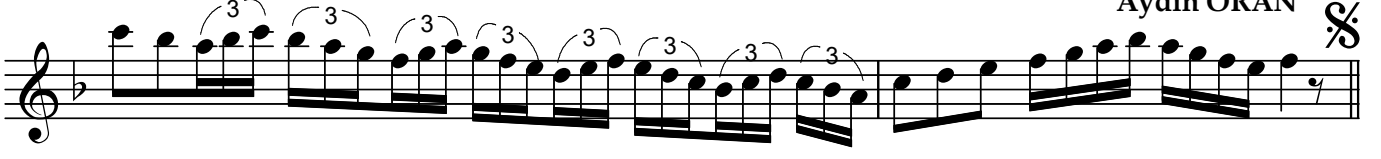
Musical notation for the second hane of the Acemkürdi Saz Semâisi. It consists of three staves of music in 10/8 time. The first staff starts with a treble clef and a key signature of one flat. The music features a mix of eighth and sixteenth notes, with several triplet markings (indicated by a '3' above a bracket) in the second and third staves. The piece concludes with a fermata over the final note.

3 . Hane

Musical notation for the third hane of the Acemkürdi Saz Semâisi. It consists of two staves of music in 10/8 time. The first staff starts with a treble clef and a key signature of one flat. The music features a mix of eighth and sixteenth notes, with several triplet markings (indicated by a '3' above a bracket) in the second staff. The piece concludes with a fermata over the final note.

ACEMKÜRDİ SAZ SEMÂİSİ

Aydın ORAN §



4 . Hane (Yürük semâi)



(Devr-i turan)



Dr.Semra Özgün
Kasım-2020