

EMİN ONGAN
ÜSKÜDAR MÜSİKİ
CEMİYETİ NEŞRİYATI

HİCAZKÂR PEŞREV

Usûl: Devr-i Kebir

Tanburi Büyük Osman Bey

1. Hane



Dr. Semra Özgün
Ekim - 2004

2. Hane

HİCAZKÂR PEŞREV

Tanburi Büyük Osman Bey

The 2. Hane section consists of six staves of music. The first staff begins with a treble clef, a key signature of one flat and one sharp (B-flat and F-sharp), and a 7/8 time signature. The melody is written in a single line. The second staff continues the melody with a similar rhythmic pattern. The third staff features a more complex rhythmic structure with sixteenth notes. The fourth staff continues with a similar pattern. The fifth staff shows a change in rhythm with eighth notes. The sixth staff concludes the section with a double bar line and a repeat sign.

3. Hane

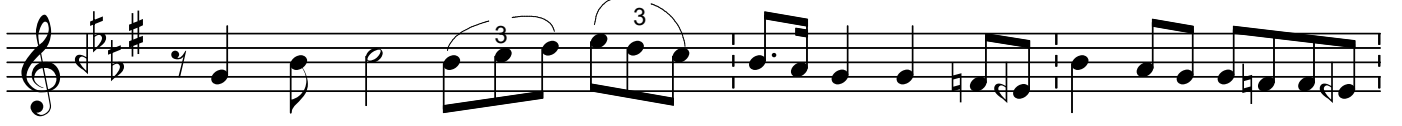
The 3. Hane section consists of five staves of music. The first staff begins with a treble clef, a key signature of one flat and one sharp (B-flat and F-sharp), and a 7/8 time signature. The melody is written in a single line. The second staff continues the melody with a similar rhythmic pattern. The third staff features a more complex rhythmic structure with sixteenth notes. The fourth staff continues with a similar pattern. The fifth staff concludes the section with a double bar line and a repeat sign.

HİCAZKÂR PEŞREV

Tanburi Büyük Osman Bey



4. Hane



Dr.S.Özgin