

# DÜĞÂH PEŞREV

Usûlü : Devrikebir

Neyzen Şeyh  
Hüseyin Fahreddin Dede Efendi

1 . Hâne

Musical notation for the first Hâne of Düğâh Peşrev, consisting of eight staves of music in 2/4 time, starting with a treble clef and a key signature of one flat. The notation includes various rhythmic values such as quarter, eighth, and sixteenth notes, along with rests and accidentals. The piece concludes with a double bar line.

Teslim

Musical notation for the Teslim section of Düğâh Peşrev, consisting of two staves of music in 2/4 time, starting with a treble clef and a key signature of one flat. The notation includes various rhythmic values such as quarter, eighth, and sixteenth notes, along with rests and accidentals. The piece concludes with a double bar line.

2 . Hâne'ye

3 . Hâne'ye

4 . Hâne'ye

Karar

Musical notation for the final four Hâne'ye and Karar sections of Düğâh Peşrev, consisting of four staves of music in 2/4 time, starting with a treble clef and a key signature of one flat. The notation includes various rhythmic values such as quarter, eighth, and sixteenth notes, along with rests and accidentals. The piece concludes with a double bar line.

# DÜĞÂH PEŞREVİ

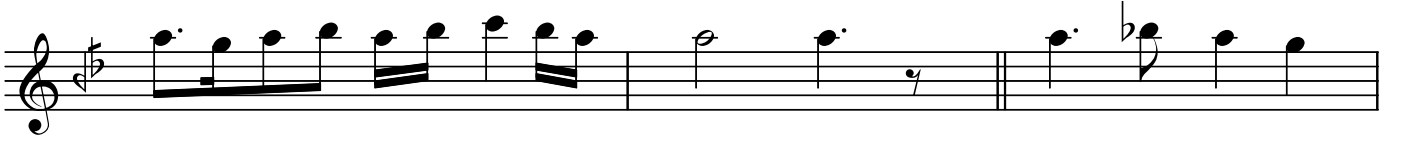
## 2 . Hâne

Musical notation for the 2nd Hâne of Düğâh Peşrevi, consisting of six staves of music in 2/4 time. The key signature is one flat (B-flat). The notation includes various rhythmic values such as quarter notes, eighth notes, and sixteenth notes, along with rests and accidentals. A fermata is placed over the first note of the third staff. The piece concludes with a double bar line and a repeat sign.

## 3 . Hâne

Musical notation for the 3rd Hâne of Düğâh Peşrevi, consisting of four staves of music in 2/4 time. The key signature is one flat (B-flat). The notation includes various rhythmic values such as quarter notes, eighth notes, and sixteenth notes, along with rests and accidentals. The piece concludes with a double bar line.

# DÜĞÂH PEŞREVİ



## 4 . Hâne



Dr.Semra  
Özgün