

## EVCARA SAZ SEMÂİSİ

Usûlü: Aksak Semâi

Dilhayat Kalfa

1. Hane

Musical notation for the first hane, consisting of four staves. The key signature is three sharps (F#, C#, G#) and the time signature is 10/8. The notation includes various rhythmic values, accidentals, and dynamic markings such as *f* and *p*.

2. Hane

Musical notation for the second hane, consisting of four staves. The key signature is three sharps (F#, C#, G#) and the time signature is 10/8. The notation includes various rhythmic values, accidentals, and dynamic markings such as *mf* and *f*.

3. Hane

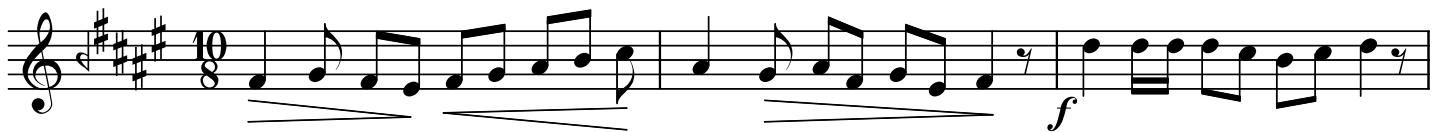
Musical notation for the third hane, consisting of three staves. The key signature is three sharps (F#, C#, G#) and the time signature is 10/8. The notation includes various rhythmic values, accidentals, and dynamic markings such as *f*.

"Evcara Saz Semâisi"

Dilhayat Kalfa



4. Hane



Dr.Semra Özgün  
17.03.2001

SON