

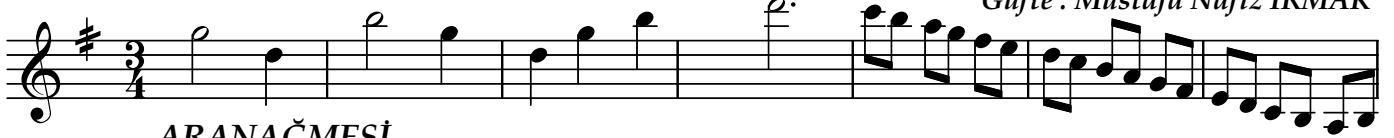
MAHUR ŞARKI

"Ateşin gözlerini ruha kemend etme sakın"

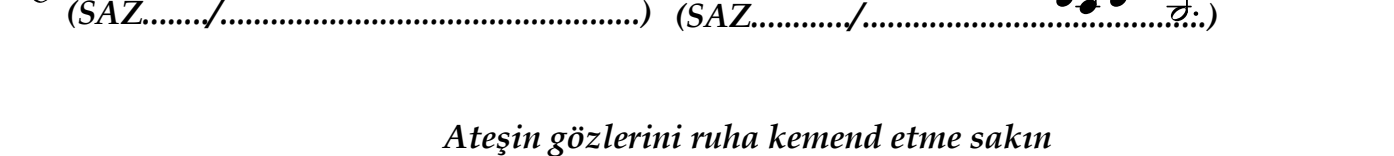
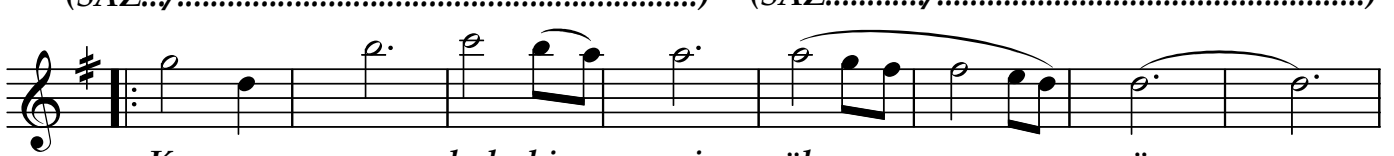
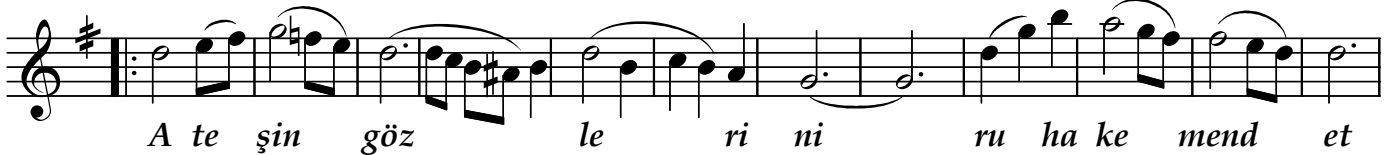
Beste : Sadi İŞILAY

Güfte : Mustafa Nafiz IRMAK

Usûl: Semâî



ARANAĞMESİ



Dr.Semra Özgün
Kasım-2003

Ateşin gözlerini ruha kemend etme sakın
Beni Leylâ gibi sen zülfüne bendetme sakın
Kanayan kalbimi öksüz bırakıp gitme sakın
Beni Leylâ gibi sen zülfüne bendetme sakın