

KÜRDÎLİHİCAZKÂR SAZ SEMÂİSİ

Aksak Semâi

Varujan ZİLCİYAN

(09.07.1984)

1. Hane

Musical notation for the first Hane, featuring a treble clef, a key signature of two flats (B-flat and E-flat), and a 10/8 time signature. The melody is written in a single line with various rhythmic values and accidentals. The piece concludes with two boxed measures labeled '1' and '2'.

Teslim

Musical notation for the Teslim section, featuring a double bar line and a repeat sign. The melody includes several triplet markings (indicated by a '3' in a circle) and various rhythmic patterns. The piece concludes with two boxed measures labeled '1' and '2'.

2. Hane

Musical notation for the second Hane, featuring a treble clef, a key signature of two flats and one sharp (B-flat, E-flat, and F-sharp), and a 10/8 time signature. The melody includes triplet markings. The piece concludes with two boxed measures labeled '1' and '2'.

3. Hane

Musical notation for the third Hane, featuring a treble clef, a key signature of two flats and one sharp (B-flat, E-flat, and F-sharp), and a 10/8 time signature. The melody includes triplet markings. The piece concludes with two boxed measures labeled '1' and '2'.

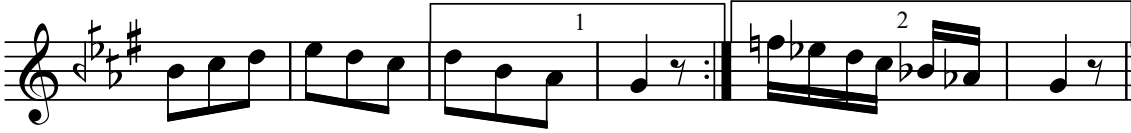
4. Hane

Musical notation for the fourth Hane, featuring a treble clef, a key signature of two flats and one sharp (B-flat, E-flat, and F-sharp), and a 10/8 time signature. The melody is written in a single line. The piece concludes with two boxed measures labeled '1' and '2'.

KÜRDÎLİHİCAZKÂR SAZ SEMÂİSİ -2



(Ağırlaşarak...)



§
Dr.Semra Özgün
Nisan-2020